

15 | LS





LS 460

386-hp (RWD),¹ 4.6-liter V8 and an eight-speed automatic Electronically Controlled Transmission with intelligence (ECT-i). Dual-zone climate control with smog sensor, Drive Mode Select and Navigation System with 12.3-inch multimedia display. Available with RWD or AWD and short or long wheelbase.

LS 460 F SPORT

Signature mesh grilles, genuine aluminum interior trim and 19-inch forged-alloy wheels² by BBS. A limited-slip rear differential (RWD), high-performance Brembo[®] front brakes,³ sport-tuned and lowered Adaptive Variable Air Suspension and a paddle-shift transmission with downshift rev-matching (RWD). Available with RWD or AWD.

LS 600h L

A 5.0-liter V8 paired with Lexus Hybrid Drive and an Electronically controlled Continuously Variable Transmission (ECVT). 438 total system horsepower.¹ Mark Levinson[®] 19-speaker Reference Surround Sound Audio System,⁴ climate-comfort front seats and heated steering wheel. Full-time AWD.

ALWAYS INSPIRING.
NEVER IGNORED.



INTRODUCING
THE 2015 LEXUS LS



F SPORT PERFORMANCE

With a 386-hp (RWD)¹ V8 engine, the LS is already an imposing figure. The F SPORT is even more impressive, both inside the vehicle and out. Inspired by the world-renowned Lexus LFA supercar, the LS F SPORT is aggressively styled to match its exhilarating performance. Rear-wheel drive models feature a limited-slip rear differential and downshift rev-matching to help you achieve an unparalleled experience behind the wheel.



F SPORT DESIGN

The LS F SPORT goes above and beyond to deliver an intense driving experience. Bolstered front seats help keep you firmly planted throughout each and every breathtaking turn. Wrap your hands around the steering wheel and become one with such features as paddle shifters, a perforated leather grip and an available heater. And bold genuine aluminum trim accentuates the LS F SPORT's aggressive nature.



The striking design of the LS is just one way it turns heads. In addition to offering an advanced system⁵ that is designed to detect if the driver is facing ahead with eyes open, it offers the world's first reactive pedestrian detection system.⁵ With both radar and near-infrared technology, it can bring the vehicle to a complete stop—even at night—at speeds up to 24 mph.



DESIGN THAT COMMANDS
ATTENTION. INNOVATION
THAT DEMANDS IT.

Imagining how the visionary LS would see the world, artist Giles Revell created this photograph using radar technology similar to that found in the available Advanced Pre-Collision System (PCS).⁵

THE MORE YOU LOOK IN, THE MORE IT STANDS OUT.



CRAFTSMANSHIP

Impeccable craftsmanship can be found in every corner of the LS, from the supple leather-trimmed interior to the vertical design of the LED foglamps. But perhaps the finest example is the stunning design of the available *Shimamoku* Espresso wood-trimmed steering wheel and matching interior accents, which combine the organic feel of natural wood with a layered appearance that evokes modern art. It takes 67 steps of craftsmanship and 38 days to create this remarkable look.



ADAPTIVE VARIABLE AIR SUSPENSION

By monitoring the road surface, vehicle speed and your own driving style, available AVS automatically adjusts the shock absorbers' damping force to help provide optimal comfort and control—helping you to carve through corners with precision. And the available Variable Gear-Ratio Steering system automatically adjusts the steering gear ratios for easier low-speed maneuvering and increased high-speed responsiveness and control.



INFRARED CLIMATE CONTROL

While conventional climate-control systems respond to cabin temperatures, the LS has an available infrared sensor to measure the surface temperature of rear-seat occupants. It then automatically adjusts the climate to surround each person with his or her individualized comfort. From the cabin to the seats to the steering wheel, every possible human touchpoint has been evaluated and considered, for the ultimate in comfort.



VARIABLE DRIVING MODES

Drive Mode Select's Sport mode alters the powertrain by holding lower gears longer and providing more dynamic throttle response. The available Sport S+ mode pushes the suspension and steering systems to deliver enhanced handling response. Comfort mode provides a smoother ride. And if you choose ECO mode, the throttle response and climate-control system are moderated for enhanced fuel efficiency.



LEXUS ENFORM REMOTE

The new available Lexus Enform Remote⁶ mobile app can remotely start the engine, lock and unlock doors, check the status of doors and windows as well as your fuel level, and can help find your vehicle's location in a parking lot. And, should you loan your LS to another driver, you can receive instant alerts if, for example, a preset speed or mile limit is exceeded. Lexus Enform Remote⁶ is complimentary for the first year of ownership. *Learn more at lexus.com/enform.*



LEXUS ENFORM APP SUITE

With a spectacular 12.3-inch split-screen multimedia display, the available Lexus Enform⁷ and Safety Connect⁸ offer more than the convenience of live, 24-hour navigation assistance and emergency services at the press of a button. With the subscription-free App Suite,⁷ making dinner reservations and ordering movie tickets has never been easier. Using your voice, Siri[®] Eyes Free⁹ enables you to check e-mails, send text messages and more. *Learn more at lexus.com/enform.*



MULTI-DIMENSIONAL AUDIO

Engineers and technicians spent over 2,000 hours tuning the available 19-speaker, 450-watt Mark Levinson Reference Surround Sound Audio System⁴ so that the sound quality in the LS would rival the finest concert halls. And to audiophiles around the world, it will come as no surprise that the 7.1-channel architecture delivers multi-dimensional sound and musical clarity once reserved for top-of-the-line home-theater systems.



ADVANCED PRE-COLLISION

The available Advanced Pre-Collision System (PCS)⁵ is engineered to detect an imminent frontal collision. Using near-infrared stereoscopic cameras and radar technology, it's designed to detect three-dimensional objects in your path. In addition to retracting the front seatbelts, it has the ability to prepare the Brake Assist¹⁰ system to help provide increased braking pressure the moment you step on the brake pedal—and can even automatically apply the brakes to bring the LS to a complete stop at speeds up to 24 mph.





“A SMOOTH, CIVILIZED BEAST.”

—MAXIM (ON THE LSF SPORT), OCTOBER 10, 2013



The already exceptionally spacious LS gives you even more space with a long wheelbase on the LS 460 L and LS 600h L. To make the most of this expanse, the LS offers an Executive-Class Seating Package.* Both rear seats have power-reclining capability, and the right-rear seat has a built-in ottoman-style leg rest^{11,12} and an indulgent shiatsu massager. There's even a retractable wood-trimmed console table that swivels into place at your convenience.



HYBRID PERFORMANCE

The flagship of the Lexus brand, the LS 600hL, is infused with innovation. From launch, it was the world's first prestige luxury and AWD V8 hybrid. With 438 total system horsepower¹ and a 0-to-60 time of 5.6 seconds,^{1,13} the LSh pairs a powerful 5.0-liter V8 gasoline engine with cutting-edge Lexus Hybrid Drive technology. The result is a feeling of smooth, seamless power that you just can't get in a conventional automobile.



A. Available Mark Levinson Reference Surround Sound Audio System⁴ **B.** Remote Touch¹⁴ and Drive Mode Select **C.** Available Rear-Seat Entertainment System (RSES) with 9.0-in screen and Blu-ray/DVD player **D.** LS F SPORT Brembo[®] front brakes³ and 19-inch forged alloy wheels² by BBS **E.** Flaxen leather interior trim with available Ultra Luxury Package **F.** Power moonroof



G. LS F SPORT electroluminescent instrumentation **H.** LED taillamps **I.** Light Gray leather interior trim with available Executive-Class Seating Package **J.** Available Shimamoku Espresso wood-trimmed steering wheel **K.** Available power rear-door sunshades **L.** Available rear bumper appliqué. For a complete list of Genuine Lexus Accessories, visit lexus.com/LS/accessories



ALL-WEATHER DRIVE

To help provide you with even more command of the road, all-wheel drive (AWD) is available on every LS. The system distributes power to the wheels with the best grip, helping to improve traction, road feel and control while delivering greater command during acceleration and cornering.



KEY STANDARD FEATURES

SmartAccess^{15,16} with push-button Start/Stop // Dual-zone automatic climate control with interior air filter, smog sensor and automatic recirculation mode // Scratch-resistant exterior clearcoat paint // Navigation System with Remote Touch¹⁴ device, 12.3-inch multimedia center-console display with integrated backup camera¹⁷ // Lexus Enform Destinations, Safety Connect⁸ and Remote⁶ app. Subscription required. One-year trial subscription included // Subscription-free traffic and weather information¹⁸ // Leather-trimmed interior // Drive Mode Select // Intuitive Parking Assist¹⁹ // LED daytime running lights // 10 standard airbags²⁰ // LED foglamps

INDIVIDUAL OPTIONS

Blind Spot Monitor²¹ with Rear Cross-Traffic Alert²² (standard on LSh) // Adaptive Variable Air Suspension with Variable Gear-Ratio Steering (VGRS), Comfort and Sport S+ drive modes (standard on LSh) // Pre-Collision System²³ with all-speed Dynamic Radar Cruise Control²⁴ // LED headlamps and intelligent high-beam headlamps²⁵ (standard on LSh) // Mark Levinson 19-speaker, 450-watt Reference Surround Sound Audio System⁴ with 7.1-channel architecture and DVD/CD player (standard on LSh) // Heated steering wheel (standard on LS AWD, LSh)

PACKAGES

COMFORT PACKAGE (Standard on LS LWB, LSh)

Front-seat Climate Concierge with climate-comfort front seats // Heated outboard rear seats (AWD only) // Power rear sunshade // Power trunk open/close

SEMI-ANILINE LEATHER AND ALCANTARA[®] UPGRADE PACKAGE (Standard on LSh)

Semi-aniline leather-trimmed interior // Alcantara headliner // Wood trim on rear ventilation outlets

ULTRA LUXURY PACKAGE (Standard on LSh)

Four-zone climate control, including rear overhead ducts and Air Purifier // Four-zone Climate Concierge with climate-comfort front and outboard rear seats // Power rear sunshade (standard on LS LWB) // Power rear-door sunshades // Power-adjustable outboard rear seats with memory, two-way power lumbar support, lumbar massage and outboard rear butterfly headrests // Wood-trimmed climate and audio controls in rear-center armrest // Power trunk open/close (standard on LS LWB) // Rear-seat cool box (excluding LSh) // Rear seat-mounted side airbags (SRS)²⁰

EXECUTIVE-CLASS SEATING PACKAGE (Available on LS LWB, LSh only)

(Includes Semi-Aniline Leather and Alcantara Upgrade Package) + Four-zone climate control, including rear overhead ducts, Air Purifier and infrared rear-passenger temperature sensor; four-zone Climate Concierge and climate-comfort rear seats (standard on LSh) // Power-adjustable rear seats with memory and two-way power lumbar support; power-adjustable outboard rear butterfly headrests (standard on LSh) // Right-rear power recliner with ottoman^{11,12} and multifunction shiatsu massage // Wood- and leather-trimmed rear-center console with climate and audio controls, and retractable wood-trimmed table // Rear-seat cool box (excluding LSh) // Power rear and rear-door sunshades (standard on LSh) // Rear-Seat Entertainment System (RSES) with Blu-ray/DVD player, 9.0-inch screen and wireless headphones²⁶ // Leather-trimmed instrument panel and glovebox door (standard on LSh) // Rear seat-mounted side airbags (SRS)²⁰ (standard on LSh)

ADVANCED PRE-COLLISION SYSTEM PACKAGE (Available on LS LWB, LSh only)

Pre-Collision System⁵ with all-speed Dynamic Radar Cruise Control²⁴ // Active Pedestrian Detection System⁵ with infrared and stereo-camera technology // Driver Attention Monitor⁵ with closed-eye detection // Lane Keep Assist²⁷ // Low-Speed Collision Avoidance Assist²⁸

ALL-WEATHER PACKAGE (Standard on LS LWB, LSh)

Windshield-wiper deicer and headlamp washers // Enhanced interior heater for faster heat output in cold weather // Higher-capacity vehicle battery

LS F SPORT

(Includes all LS standard equipment) + F SPORT exterior styling including front bumper, upper and lower grille inserts, rear diffuser // 19-inch split-10-spoke forged alloy wheels² by BBS // Brembo opposed six-piston front brake calipers with 14.8-in ventilated discs³ // TORSEN[®] limited-slip rear differential²⁹ (RWD only) // F SPORT-tuned, lowered Adaptive Variable Air Suspension, stabilizer bars and shock absorbers // Variable Gear-Ratio Steering (VGRS) // Black leather-trimmed interior with white perforations // F SPORT bolstered front seats with embossed headrests // Paddle shifters // Downshift rev-matching (RWD only) // Black Alcantara headliner // Aluminum pedals and interior trim // Headlamp washers

WHEELS



18-in split-five-spoke alloy wheels² Standard LS



19-in split-10-spoke forged alloy wheels² by BBS Standard LS F SPORT



19-in split-seven-spoke alloy wheels² Standard LSh Available LS



19-in 15-spoke alloy wheels² Available LS

KEY SPECS

4.6L V8

LS

5.0L V8

LSh + Lexus Hybrid Drive

0-60 IN

5.4_S^{1,13} / 5.9_S^{1,13} / 5.6_S^{1,13}

LSRWD

LSAWD

LSh

ENGINE

PERFORMANCE

386_{HP}¹

LSRWD

360_{HP}¹

LSAWD

438_{HP}¹ TOTAL SYSTEM

LSh

RWD OR AWD

STD. LS

STD. LSh
AVAIL. LS

HORSEPOWER

DRIVETRAIN

8-SPEED

LS

ECVT

LSh

PADDLE-SHIFT AUTOMATIC TRANSMISSION (LS F SPORT); AUTOMATIC TRANSMISSION

ELECTRONICALLY CONTROLLED CONTINUOUSLY VARIABLE TRANSMISSION

16 / 24 / 19³⁰ // 16 / 23 / 18³⁰ // 19 / 23 / 20³⁰ EST MPG

LSRWD

LSAWD

LSh

FUEL ECONOMY, EPA-ESTIMATED RATINGS (CITY/HIGHWAY/COMBINED)



HEIGHT

57.3 IN (LS F SPORT)
58.1 IN (LS)
57.7 IN (LS w/Air Suspension)
58.3 IN (LSh)



WHEELBASE

116.9 IN (LS, LS F SPORT), 121.7 IN (LS LWB, LSh)

WIDTH

73.8 IN

OVERALL LENGTH

200.0 IN (LS, LS F SPORT), 205.0 IN (LS LWB, LSh)

LSh shown in Fire Agate Pearl.

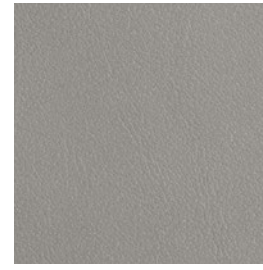
INTERIOR



BLACK LEATHER



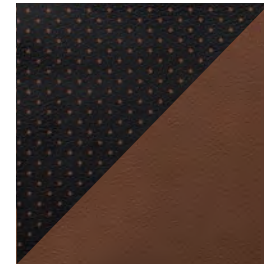
PARCHMENT LEATHER



LIGHT GRAY LEATHER



FLAXEN LEATHER

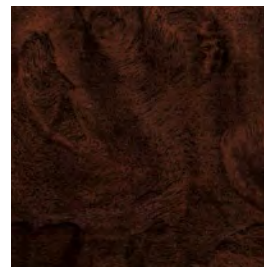


BLACK AND SADDLE TAN LEATHER

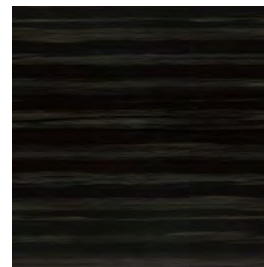


BLACK WITH WHITE PERFORATIONS* LEATHER

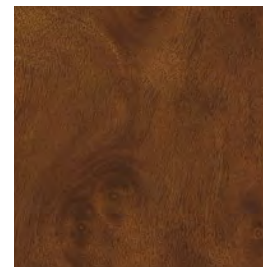
TRIM



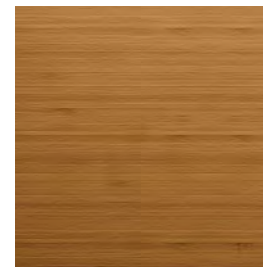
DARK BROWN WALNUT



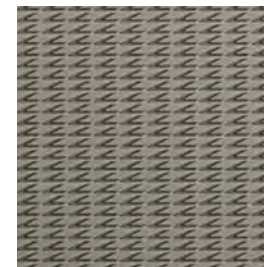
SHIMAMOKU ESPRESSO WOOD



MATTE DARK BROWN ASH BURL



MATTE BAMBOO[†]



GENUINE ALUMINUM*

EXTERIOR



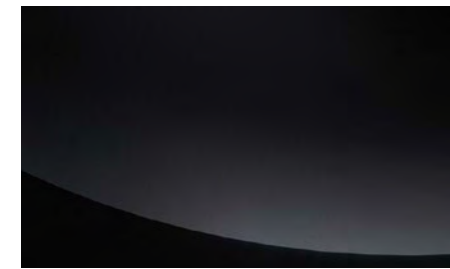
STARFIRE PEARL



LIQUID PLATINUM



NEBULA GRAY PEARL



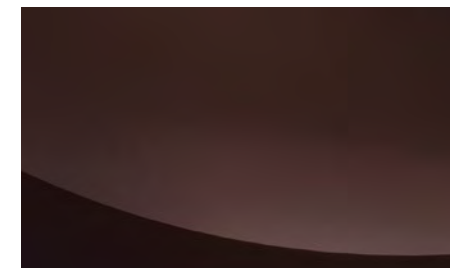
OBSIDIAN



MATADOR RED MICA



SATIN CASHMERE METALLIC



FIRE AGATE PEARL



ULTRA WHITE*

	EXTERIOR								TRIM				
LEATHER INTERIOR	Starfire Pearl	Liquid Platinum	Nebula Gray Pearl	Obsidian	Matador Red Mica	Satin Cashmere Metallic	Fire Agate Pearl	Ultra White*	Dark Brown Walnut	Shimamoku Espresso Wood	Matte Dark Brown Ash Burl	Matte Bamboo [†]	Genuine Aluminum*
Black	●■	●■	●■	●■	●■					●■		●■	
Parchment	●■			●■	●■	●■	●■		●■				
Light Gray	●■	●■	●■	●■	●■					●■			
Flaxen	●■	▲●■	▲●■	▲●■	▲●■	●■	●■	▲		●■			▲
Black and Saddle Tan	●■	●■	●■	●■	●■		●■				●■		
Black with White Perforations*		▲	▲	▲	▲			▲					▲

● LS
 ■ LSh
 ▲ FSPORT
 * FSPORT only
 † Requires Semi-Aniline Leather and Alcantara Upgrade Package or Executive-Class Seating Package (LS)

SERVICES AS INNOVATIVE AS THE LS ITSELF.

THE LEXUS DELIVERY AND TECHNOLOGY SPECIALISTS. To assist you in getting the most out of your LS, the Lexus Delivery Specialist will conduct a personalized delivery focused on every feature, setting and function you desire. To answer questions that arise after delivery, the Lexus Technology Specialist can offer expert guidance in person or without you ever leaving the driveway, via camera-enabled iPad®³¹ apps like FaceTime®.³² Learn more about our Lexus Delivery and Technology Specialist services at lexus.com/specialists.

WARRANTY Four-year/50,000-mile Lexus Limited Warranty. Six-year/70,000-mile Powertrain Warranty. Six-year/unlimited-mileage Corrosion Perforation Warranty. Eight-year/100,000-mile Hybrid System Warranty. All warranties with zero deductible. See the *LS Warranty and Services Guide* at your Lexus dealer for details. **DISCLOSURES 1.** Ratings achieved using the required premium unleaded gasoline with an octane rating of 91 or higher. If premium fuel is not used, performance will decrease. **2.** 18- or 19-in performance tires are expected to experience greater tire wear than conventional tires. Tire life may be substantially less than 15,000 miles, depending upon driving conditions. **3.** High-friction brakes require periodic inspection and measurement as outlined in the *Warranty and Services Guide*. The pads and rotors are expected to experience greater wear than conventional brakes. Pad life may be less than 20,000 miles, and brake rotor life may be less than 50,000 miles depending on driving conditions. F SPORT models may feature Brembo® brakes. It is an inherent characteristic of materials and design of brake pads used in this high-performance brake system that brake noise/squeal may result. **4.** Mark Levinson® is a registered trademark of Harman International Industries, Inc. **5.** Advanced Pre-Collision System is designed to help reduce the crash speed and damage in certain frontal collisions only. Driver Attention Monitor is designed to alert the driver if a potential hazard is detected ahead and the driver's face appears to be turned away. The Active Pedestrian Detection System is designed to help reduce the impact speed and damage in certain frontal collisions only. They are not collision-avoidance systems and are not substitutes for safe and attentive driving. System effectiveness depends on many factors. See *Owner's Manual* for details. **6.** Use only if aware of circumstances surrounding the vehicle, and it is legal & safe to do so (e.g., car uncovered in open area, no people or pets in or nearby). If vehicle has not been driven for over a week, services will not be available until next time vehicle is started. Functionality depends on many factors, such as vehicle and smartphone connectivity. See usage precautions, service limitations & *Owner's Manual*. Data charges may apply. Registration, app download are required. Must have active Safety Connect subscription. Annual fee required after 1-year trial. **7.** Be sure to obey traffic regulations and maintain awareness of road and traffic conditions at all times. Apps/services vary by phone/carrier; functionality depends on many factors. Select apps use large amounts of data; you are responsible for charges. Apps & services subject to change. See lexus.com/enform for details. **8.** Contact with the response center may not be available in all areas. Service Agreements required. A variety of subscription terms available; charges will vary. See lexus.com for details. **9.** Always drive safely, obey traffic laws & focus on the road while driving. Siri® is available in Beta only on iPhone® 4S, iPhone® 5, iPad® with Retina® display, iPad® mini, & iPod® touch, 5th gen. & requires Internet access. Siri® is not available in all languages or all areas & features vary by area. Data charges may apply. See apple.com & phone carrier for details. **10.** Brake Assist is designed to help the driver take full advantage of the benefits of ABS. It is not a substitute for safe driving practices. Braking effectiveness also depends on proper brake-system maintenance, tire and road conditions. **11.** Rear-seat leg rest may not fully raise based on height of rear-seat passenger. Do not allow passengers to sit in a seat that has been fully or severely reclined while driving. This feature is intended for use only when the vehicle is parked. While the vehicle is being driven, all vehicle occupants should have the seatback upright, sit well back in the seat and properly wear the seatbelts provided. In the event of a collision, the more the seat is reclined, the greater the risk of death or personal injury. See *Owner's Manual* for additional information. **12.** If leg rest is in use, seating capacity could be reduced from four to three. **13.** Performance figures are for comparison only and were obtained with prototype vehicles by professional drivers using special safety equipment and procedures. Do not attempt. **14.** Be sure to obey traffic regulations and maintain awareness of road and traffic conditions. **15.** The SmartAccess system may interfere with some pacemakers or cardiac defibrillators. If you have one of these medical devices, please talk to your doctor to see if you should deactivate this system. **16.** The engine immobilizer is a state-of-the-art anti-theft system. When you insert your key into the ignition switch or bring a SmartAccess fob into the vehicle, the key transmits an electronic code to the vehicle. The engine will only start if the code in the transponder chip inside the key/fob matches the code in the vehicle's immobilizer. Because the transponder chip is embedded in the key/fob, it can be costly to replace. If you lose a key or fob, your Lexus dealer can help. Alternatively, you can find a qualified independent locksmith to perform high-security key services by consulting your local *Yellow Pages* or by contacting www.aloa.org. **17.** The backup camera does not provide a comprehensive view of the rear area of the vehicle. You should also look around outside your vehicle and use your mirrors to confirm rearward clearance. Cold weather may limit effectiveness and view may become cloudy. **18.** HD Radio™ Technology manufactured under license from iBiquity Digital Corporation U.S. and Foreign Patents. HD Radio™ and the HD, HD Radio, and "Arc" logos are proprietary trademarks of iBiquity Digital Corp. **19.** Do not rely exclusively on the Intuitive Parking Assist system. Always look over your shoulder and use your mirrors to confirm clearance. System effectiveness depends on many factors. See *Owner's Manual* for details. **20.** All the airbag (AB) systems are Supplemental Restraint Systems. All ABs (if installed) are designed to inflate only under certain conditions and in certain types of severe collisions: frontal and knee ABs typically inflate in frontal collisions; side and side curtain ABs in side collisions; Roll-Sensing Curtain ABs at a severe tilt degree, roll or lateral G-force. In all other accidents, the ABs will not inflate. To decrease the risk of injury from an inflating AB, always wear seatbelts, sit upright in the middle of the seat as far back as possible and do not lean against the door. Do not put objects in front of an AB or around the seatback. Do not use a rearward-facing child seat in any front passenger seat. The force of an inflating AB may cause serious injury or death. See *Owner's Manual* for further information/warnings. **21.** Do not rely exclusively on the Blind Spot Monitor. Always look over your shoulder and use your turn signal. There are limitations to the function, detection, range and clarity of the monitor. For a complete list of limitations and directions regarding use of the monitor, see *Owner's Manual*. **22.** Do not rely exclusively on the Rear Cross-Traffic Alert system. Always look over your shoulder and use your mirrors to confirm rear clearance. There are limitations to the function, detection, range and clarity of the system. To learn more, see *Owner's Manual*. **23.** The Pre-Collision System is designed to help reduce the crash speed and damage in certain frontal collisions only. It is not a collision-avoidance system and is not a substitute for safe and attentive driving. System effectiveness depends on many factors, such as speed, driver input and road conditions. See *Owner's Manual* for further information. **24.** Dynamic Radar Cruise Control is designed to assist the driver and is not a substitute for safe and attentive driving practices. See *Owner's Manual* for details. **25.** Intelligent high-beams system operates at speeds above 21 mph. Situations such as a dirty windshield, variable weather, lighting conditions and hilly terrain will limit effectiveness, requiring the driver to manually turn off. See *Owner's Manual* for details. **26.** Headphones are for passenger use only. Do not use while operating vehicle. **27.** Lane Keep Assist is designed to read lane markers under certain conditions. It provides a visual and audible alert and slight steering force when lane departure is detected. It is not a collision-avoidance system or a substitute for safe and attentive driving. Effectiveness depends on many factors. See *Owner's Manual* for more information. **28.** Low-Speed Collision Avoidance Assist operates at 24 mph or less. It is intended to assist a driver, but it is the driver's responsibility to be aware of the vehicle's surroundings. The system cannot prevent all collisions, and performance is dependent on road, weather and vehicle conditions. **29.** TORSEN® is a registered trademark of Zexel Torsen, Inc. **30.** 2015 EPA-estimated ratings. Actual mileage will vary. **31.** iPhone® and iPad® are registered trademarks of Apple Inc. All rights reserved. **32.** FaceTime® is a registered trademark of Apple Inc. All rights reserved.

Lexus strives to build vehicles to match customer interest, and thus they typically are built with popular options and option packages. Not all options/packages are available separately, and some may not be available in all regions of the country. See lexus.com for information about options/packages commonly available in your area. If you would prefer a vehicle without any or with different options, contact your dealer to check for current availability or the possibility of placing a special order. Specifications, features, equipment, technical data, performance figures, options, and color and trim are based upon information available at time of printing, are subject to change without notice, and are for mainland U.S.A. vehicles only. Some vehicles shown with available equipment. See your Lexus dealer for details. Lexus reminds you to wear seatbelts, secure children in rear seat, obey all traffic laws and drive responsibly. For more information, call 800-USA-LEXUS (872-5398) or visit lexus.com. To learn more about your financing options, contact your Lexus dealer or call Lexus Financial Services at 800-874-7050.

