



17CT

# INTRODUCING THE 2017 CT

## CT 200h

The CT 200h boasts five-door versatility with generous cargo space, an EPA-estimated 42-MPG combined rating,<sup>1</sup> Electronically controlled Continuously Variable Transmission, double-wishbone rear suspension and Yamaha<sup>®</sup> lateral performance dampers.

## CT 200h F SPORT

Race-inspired styling and performance details drive the CT 200h F SPORT. The CT 200h F SPORT features an exclusive F SPORT-tuned suspension and a steering wheel with perforated leather trim and F SPORT badge. F SPORT styling includes the signature black roof, a rear spoiler with aerodynamic cutouts, and an interior trimmed in Black NuLuxe or available Black leather with white perforations.





# LET YOUR CURIOSITY DRIVE YOU

What lies ahead is more than an open road. It's a blank slate.  
The 2017 Lexus CT opens the door to the unexpected.

**AWAKEN THE IMAGINATION  
AT EVERY TURN**

Exceptional styling, dynamic handling, five-door access and an outstanding fuel efficiency rating<sup>1</sup>—getting behind the wheel of a CT is the only excuse you need to get out and go. Engineered to deliver the elegance and innovation you expect with the captivating performance you crave, the CT puts more into every mile. With advanced aerodynamics, a low center of gravity and generous in-dash technology, the open road is an open invitation.

# WANDER- LUST



# AT FIRST SIGHT



This is the luxury five-door hybrid that your tailgating and camping trips have been waiting for. Enjoy the ease of loading cargo with the 60/40-split, fold-down rear seats and a rear door designed for optimal access.



# JOY. RIDE. REPEAT.

Thrilling performance comes easily to the CT, thanks to a highly rigid chassis and Yamaha lateral performance dampers. Combined with a MacPherson-strut front suspension, double-wishbone suspension in the rear and optimized overall body rigidity, the CT delivers a dynamic handling experience as pronounced as its good looks.



# THE SEAT OF POWER

Command every scene with the race-inspired details and sleek styling of the driver's cockpit. With every element engineered to help optimize the driver's control and comfort, the low-set bolstered sport seats are distinctly positioned for a low center of gravity and enhanced driving dynamics. The wide-grip steering wheel includes dual five-way fingertip controls for audio and display operation, and the driver-centric cabin is also complemented with a low hood for optimum visibility.







## UNADULTERATED SOPHISTICATION

Step inside the cabin of the CT to experience true indulgence. In addition to the available perforated leather, the CT also offers a trim as elegant as it is innovative. Weighing half as much as traditional leather, NuLuxe generates 65% fewer CO<sub>2</sub> emissions during the manufacturing process than other leather substitutions—and produces zero volatile organic compounds during the production process.

# INNOVATIVE TECH. INSPIRED DESIGN.

Put the world at your fingertips with the wealth of innovative technology featured in the CT. Housed within a generous console, the in-dash technology has you covered, from convenient hands-free services to multiple drive modes. Plan every trip with ease with available Navigation<sup>2</sup> with voice activation, available Bluetooth<sup>®</sup> technology<sup>3</sup> and Siri<sup>®</sup> Eyes Free.<sup>4</sup> Once on the road, make your CT more responsive or efficient with a turn of a dial. Sport mode alters the powertrain for more dynamic throttle mapping and adjusts the power steering for a more responsive feel. Normal mode provides the optimal balance of fuel efficiency and engine performance. In ECO mode, engine power output is moderated for enhanced fuel efficiency. EV mode<sup>5</sup> enables you to drive for short distances at low speeds on battery power alone, minimizing noise and eliminating emissions.



# MILES OF POSSIBILITIES

More day trips. More beach trips. More reasons to go on a vacation, journey, jaunt or Sunday drive. With an EPA-estimated 42-MPG combined rating,<sup>1</sup> the CT offers one more reason to cross that cross-country road trip off your wish list.





#### THE 2017 CT F SPORT

Performance and style reach their pinnacle with the track-inspired details and sharp handling found in the CT F SPORT. Aggressive F SPORT aesthetics turns heads from all angles as this dynamic drive reimagines hybrid performance.

**INSTINCTIVE  
HANDLING  
DISTINCTIVE  
EDGE**

### **DYNAMIC F SPORT PERFORMANCE**

The CT F SPORT elevates performance from agile to aggressive. An exclusive sport-tuned suspension optimizes direct handling as revised shock absorbers increase responsiveness. Bespoke coil spring settings bolster advanced rigidity throughout the body for enhanced driving dynamics, and aerodynamic cutouts in the rear spoiler help provide added downforce for greater grip and control.



**SPORT**



# EVERYWHERE BUT MIDDLE OF THE ROAD

## RACE-INSPIRED F SPORT STYLING

The CT F SPORT epitomizes standout style. Exclusive accents create an unmistakable F SPORT exterior, with the signature black roof; the spindle grille with F SPORT mesh pattern; a bold rear spoiler; and 17-inch, split-five-spoke alloy wheels<sup>6</sup> with Graphite two-tone finish. The arresting interior comes to life with aluminum pedals, scuff plates, low-set bolstered sport seats, available Black leather trim with white perforations, and perforated leather-trimmed steering wheel and shift lever.





# THE NEXT LEVEL OF CONVENIENCE

Available Lexus Enform<sup>7</sup> elevates connected technology into a new era of concierge-level convenience. From emergency assistance to a GPS-enabled vehicle locator to a live destination specialist and more, our premium suite of connected technology offers peace of mind with every drive.



## SAFETY CONNECT

Whether you're involved in an accident, your vehicle is stolen, or the unexpected occurs, assistance can be sent directly to your vehicle's GPS location.<sup>8</sup>



## SERVICE CONNECT

Keeping up with your vehicle's health has never been easier. Get updates on everything from fuel level and mileage to maintenance alerts and more via e-mail or the mobile app.<sup>9</sup>



## REMOTE

The Lexus Enform Remote<sup>10</sup> mobile app helps you lock and unlock doors, start the engine, resume climate settings, find your vehicle in a parking lot and monitor guest drivers.



## DESTINATIONS

Get directions and destinations delivered by a real person with 24-hour, en-route navigation assistance, and upload destinations from the comfort of home.<sup>7</sup>



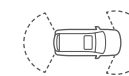
## APP SUITE

Search local listings, stream music, place restaurant reservations, buy movie tickets and more—all from the center console.<sup>7</sup>



### BACKUP CAMERA

The available backup camera<sup>11</sup> uses an inconspicuous lens mounted above the license plate to help enable the driver to view more objects in the vehicle's path when driving in reverse.



### INTUITIVE PARKING ASSIST

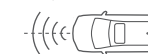
Available Intuitive Parking Assist<sup>12</sup> utilizes inconspicuous sensors integrated into the front and rear bumpers that are designed to detect surrounding objects. Using audible tones and an indicator on the multimedia display, the system can notify you of a detected object's location and proximity, helping with routine tasks like parallel parking.

# INVISIBLE INNOVATION



### DYNAMIC RADAR CRUISE CONTROL

Available Dynamic Radar Cruise Control<sup>13</sup> can help maintain a preset distance from the car traveling in front of you by automatically reducing the throttle and even applying the brakes (at speeds above 25 mph). Once the road clears, the CT returns to its preset speed.



### PRE-COLLISION SYSTEM

The available Pre-Collision System<sup>14</sup> is engineered to detect vehicles in the path of your Lexus. Should it determine a frontal collision is imminent, it's designed to automatically prepare Brake Assist<sup>15</sup> for increased braking response, and is even able to automatically begin braking before impact.





### LEXUS 10-SPEAKER PREMIUM SOUND SYSTEM

This available 10-speaker Lexus Premium Sound System offers an immersive surround-sound experience courtesy of optimized placement throughout the cabin, including a front-center speaker and a woofer in the rear.



### 3-D NAVIGATION

Use the high-resolution multimedia display or your voice to access the available Navigation System.<sup>2</sup> This system can map millions of points of interest across the country and can display information in English, French and Spanish. And, in addition to offering up-to-date traffic and weather information,<sup>16</sup> 3-D city views, and simulated views of approaching highway junctions, it displays the current speed limit and can automatically display nearby gas stations if you begin to run low on fuel.



### BLUETOOTH TECHNOLOGY

In addition to easily transferring phone numbers to your vehicle, and placing and ending calls with the touch of a button, *Bluetooth* audio technology<sup>3</sup> offers the convenience of accessing and controlling your compatible device's entire music library and even streaming audio from websites—all while your device remains in your pocket or purse.

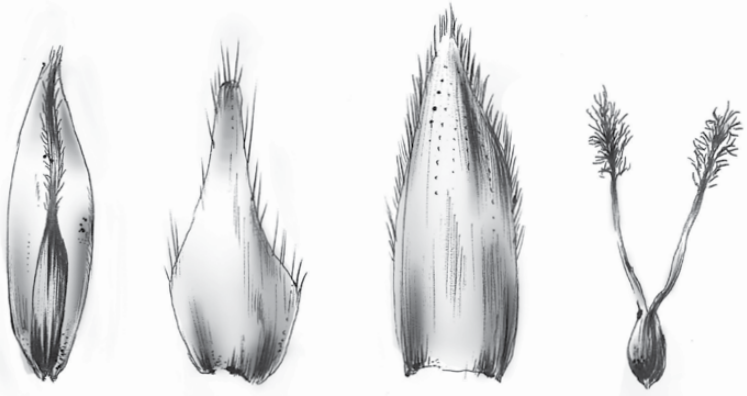


### SIRI EYES FREE

The innovative Siri Eyes Free<sup>4</sup> connects with your compatible iPhone,<sup>®17</sup> enabling you to access e-mail, send text messages and more. The Siri feature can also search your portable music collection and use the results to create customized playlists.



SUGARCANE SEEDLINGS  
SEEDLING DEVELOPMENT

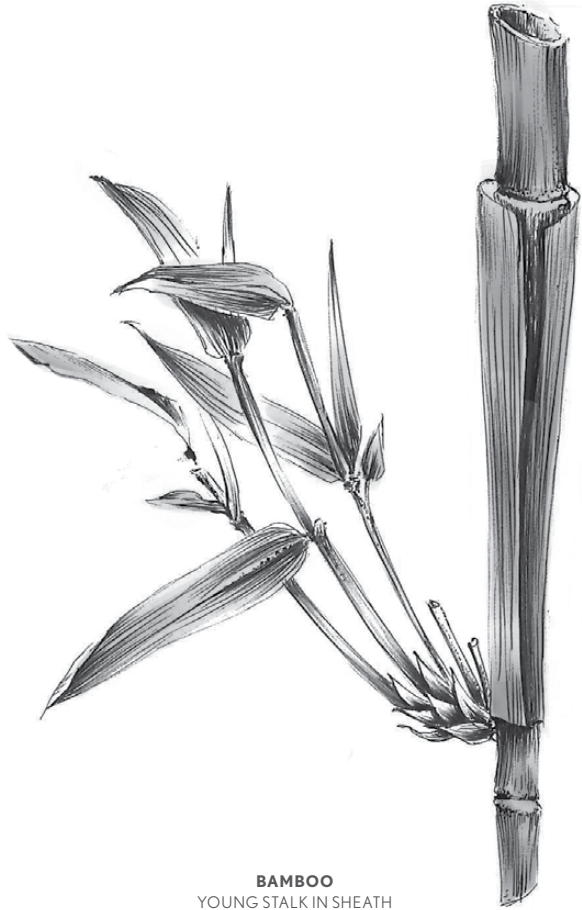


# A PROCESS OF NATURAL SEDUCTION

## THE CT IS DRIVING CHANGE WITH AN INNOVATIVE CROP OF SUSTAINABLE MATERIALS

Welcome to engineering with a green thumb. Harvesting even more ways to go greener, the CT boasts the use of plant-based plastics that contain 30% sustainable materials, including significant use of sugarcane. Even sweeter, the available 10-speaker audio system features a sound as clear as its conscience. Harnessing the beauty of one of the fastest-growing plants on Earth, the CT features the industry's first speakers constructed with sustainable bamboo charcoal resin.

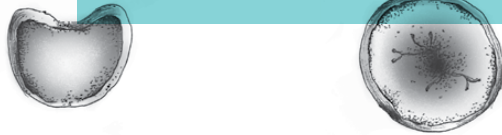
SUGARCANE  
MATURE HARVEST



BAMBOO  
YOUNG STALK IN SHEATH



BAMBOO  
CROSS SECTION



CT 200h / CT 200h F SPORT

134

TOTAL SYSTEM HP

1.8

LITER

IN-LINE 4

ATKINSON-CYCLE ENGINE  
+ LEXUS HYBRID DRIVE

FWD

STANDARD

0-60  
9.8s<sup>18</sup>

CTY  
EST. MPG<sup>1</sup>

43

HWY  
EST. MPG<sup>1</sup>

40

CMB  
EST. MPG<sup>1</sup>

42

FUEL ECONOMY  
CITY/HIGHWAY/COMBINED  
RATINGS<sup>1</sup>

ECVT

ELECTRONICALLY  
CONTROLLED CONTINUOUSLY  
VARIABLE TRANSMISSION

OVERALL LENGTH 171.3 IN / WHEELBASE 102.4 IN  
WIDTH 69.5 IN (MIRRORS FOLDED) / HEIGHT 57.3 IN  
DIMENSIONS

## STANDARD ON EVERY CT

SmartAccess<sup>19,20</sup> with push-button Start/Stop

Drive Mode Select

60/40-split fold-down rear seats

Dual-zone automatic climate control with interior air filter

Tilt-and-telescopic steering column

Power windows with one-touch open/close

Lexus six-speaker sound system with in-dash CD player

Bluetooth<sup>3</sup> and USB smartphone connectivity

Steering-wheel-mounted audio, phone and display controls

LED daytime running lights (DRL)

17-in split-five-spoke alloy wheels<sup>6</sup>

NuLuxe interior trim

Retractable cargo-area cover

Eight standard airbags<sup>21</sup>

Vehicle Stability Control (VSC)<sup>22</sup>

Lexus Enform Safety Connect<sup>8</sup> Complimentary for the first year of ownership

Complimentary maintenance services (please refer to the *Warranty and Services Guide* for details)

Electrochromic (auto-dimming) inside mirror and backup camera<sup>11</sup>

Power moonroof

LED headlamps with washers and dynamic auto-leveling, and LED foglamps

Intuitive Parking Assist<sup>12</sup>

Pre-Collision System<sup>14</sup> and Dynamic Radar Cruise Control<sup>13</sup>

## INDIVIDUAL OPTIONS

### DELIVERY AND TECHNOLOGY SPECIALISTS

To help you get the most out of these and other Lexus features, a Vehicle Delivery Specialist will walk you through nearly every setting and function you desire. And to answer questions that arise after delivery, a Vehicle Technology Specialist can offer expert guidance in person or without you ever leaving the driveway via camera-enabled iPad<sup>®17</sup> apps like FaceTime.<sup>®23</sup> Learn more about these complimentary services at [lexus.com/specialists](http://lexus.com/specialists).

# PACKAGES

## SEAT COMFORT PACKAGE

- A Heated front seats
- B Eight-way power-adjustable driver's seat; four-way power-adjustable front passenger seat

## PREMIUM PACKAGE

Includes all Seat Comfort Package equipment, plus:

- Rain-sensing wipers
- C Electrochromic (auto-dimming) inside mirror with compass
- HomeLink® universal transceiver to operate compatible garage, gate, home lighting and home security systems

## LUXURY PACKAGE

Includes all Premium Package equipment, plus:

- D Perforated leather interior trim
- Lexus Memory System to control power driver's seat and outside mirrors
- E Electrochromic (auto-dimming) outside mirrors with auto tilt-down in reverse

## DISPLAY AUDIO PACKAGE

- F Lexus Premium Sound System with 10 speakers

Color multimedia display

Voice command

Siri Eyes Free<sup>4</sup> compatibility

Backup camera<sup>11</sup>

Subscription-free Traffic and Weather updates<sup>16</sup> via HD Radio<sup>TM16</sup>

Lexus Enform Service Connect<sup>9</sup> and Remote<sup>10</sup> app. Complimentary for the first year of ownership

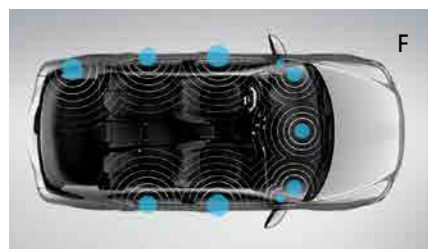
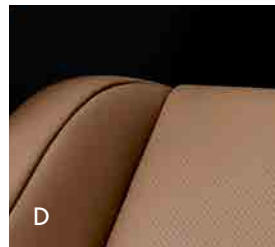
## NAVIGATION PACKAGE

Includes all Display Audio Package equipment, plus:

Navigation System<sup>2</sup> with color multimedia display and Lexus Enform App Suite<sup>7</sup>

- G Remote Touch<sup>24</sup>

Lexus Enform Destinations.<sup>7</sup> Complimentary for the first year of ownership



## F SPORT

F SPORT-tuned suspension

F SPORT front fascia and mesh grille

Black roof

- H Rear spoiler with aerodynamic cutouts

Aluminum pedals

F SPORT front fender and rear door badges

F SPORT perforated leather-wrapped steering wheel and shifter

17-in split-five-spoke alloy wheels<sup>6</sup> with Graphite two-tone finish

- I Silver Performance dash panel trim

Black headliner

Black NuLuxe interior trim

## F SPORT W/LUXURY PACKAGE

Includes all CT F SPORT and Luxury Package equipment, plus:

Black leather interior trim with white perforations

# WHEELS

17-in  
SPLIT-FIVE-SPOKE  
ALLOY WHEELS<sup>6</sup>  
STANDARD CT

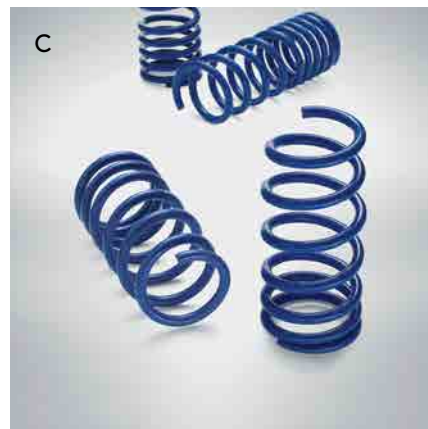
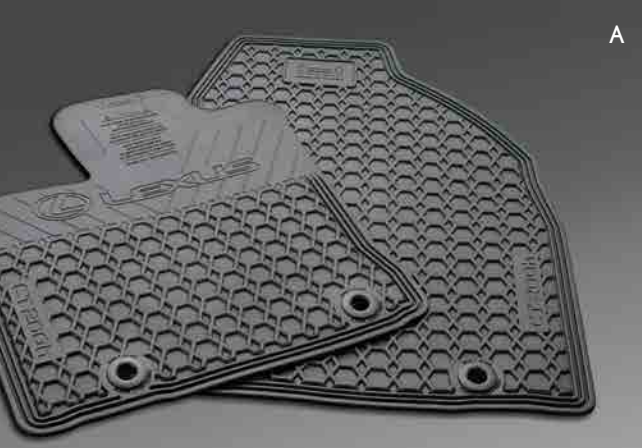


17-in  
SPLIT-FIVE-SPOKE  
ALLOY WHEELS<sup>6</sup>  
WITH GRAPHITE  
TWO-TONE FINISH  
STANDARD CT F SPORT



17-in  
F SPORT TRIDENT  
ALLOY WHEELS<sup>6,25</sup>  
AVAILABLE





# ACCESSORIES

## A ALL-WEATHER FLOOR MATS<sup>26</sup>

Durable channels help keep moisture, dirt and debris from marring the carpet.

## B ILLUMINATED DOOR SILLS

Illuminated door sills include a protective, stainless-steel overlay.

## C F SPORT LOWERING SPRINGS<sup>25</sup>

Provide a more aggressive stance and a lower center of gravity.

## D F SPORT SWAY BARS<sup>25</sup>

Ride flatter through corners with enhanced driver control.

## E ENVELOPE CARGO NET

Durable elastic-mesh net holds items upright and in place.

## REAR BUMPER APPLIQUÉ

Helps protect bumper from scratches, gouges and marring.

For a complete list of Genuine Lexus Accessories, visit [lexus.com/CT/accessories](http://lexus.com/CT/accessories)



CARAMEL NULUXE	●	●▲	●▲	●▲	●▲	●	●	●	●	●	●	●	●	●	●	●	●
PARCHMENT NULUXE	●	●▲	●▲	●▲	●▲	●	●	●	●	●	●	●	●	●	●	●	●
BLACK NULUXE	●	▲	●▲	●▲	●▲	●▲	●▲	●▲	●▲	●	▲	●	●▲	▲	●▲	●▲	●▲
BLACK LEATHER	●		●▲	●▲	●▲	●▲	●▲	●▲	●▲	●		●	●	●	●	●	●
FLAXEN LEATHER	●		●▲	●▲	●▲	●▲	●▲	●▲	●▲	●		●	●	●	●	●	●
BLACK LEATHER WITH WHITE PERFORATIONS		▲	●▲	●▲	●▲	●▲	●▲	●▲	●▲	▲		▲	▲	▲	▲	▲	▲

# INTERIOR & TRIM

CT ●  
CT FSPORT ▲

# EXTERIOR

\*Dealer-installed accessory trim

WARRANTY Four-year/50,000-mile Lexus Limited Warranty. Six-year/70,000-mile Powertrain Warranty. Six-year/unlimited-mileage Corrosion Perforation Warranty. Eight-year/100,000-mile Hybrid System Warranty. All warranties with zero deductible. See the *CT Warranty and Services Guide* at your Lexus dealer for details.

DISCLOSURES **1.** 2017 EPA 43/40/42 city/hwy/combined mpg estimates. Actual mileage will vary. **2.** Be sure to obey traffic regulations and maintain awareness of road and traffic conditions at all times. Availability & accuracy of the information provided by the Navigation System is dependent upon many factors. Use common sense when relying on information provided. Services & programming subject to change. Services not available in every city or roadway. Updates may be available from your dealer at an additional cost. See *Owner's Manual* for details. **3.** Concentrating on the road should always be your first priority while driving. Do not use the hands-free phone system if it will distract you. The Bluetooth® word mark and logos are registered trademarks owned by Bluetooth SIG, Inc. and any use of such marks by Lexus is under license. A compatible Bluetooth-enabled phone must first be paired. Phone performance depends on software, coverage & carrier. **4.** Always drive safely, obey traffic laws & focus on the road while driving. Siri® is available only on iPhone® 4s or later, iPad® w/Retina® display, iPad® mini, & iPod® touch (5th gen.) & requires Internet access. Siri® is not available in all languages or all areas & features vary by area. Some Siri® functionality & commands are not accessible in the vehicle. Data charges may apply. See Apple.com & phone carrier for details. Siri® is a registered trademark of Apple Inc. **5.** CAUTION! When driving a hybrid vehicle, pay special attention to the area around the vehicle. Because there is little vehicle noise in electric-only mode, pedestrians, people riding bicycles or other people and vehicles in the area may not be aware of the vehicle starting off or approaching them, so take extra care while driving. EV mode works under certain conditions at low speeds for up to a mile. See *Owner's Manual* for details. **6.** 17-in performance tires are expected to experience greater tire wear than conventional tires. Tire life may be substantially less than 20,000 miles, depending upon driving conditions. **7.** Be sure to obey traffic regulations and maintain awareness of road and traffic conditions at all times. Apps/services vary by phone/carrier; functionality depends on many factors. Select apps use large amounts of data; you are responsible for charges. Apps & services subject to change. See [lexus.com/enform](http://lexus.com/enform) for details. **8.** Contact with the response center may not be available in all areas. Service Agreements required. A variety of subscription terms available; charges will vary. **9.** Information provided is based on the last time data was collected from the vehicle and may not be up to date. System functionality depends on vehicle connectivity. **10.** Use only if aware of circumstances surrounding the vehicle, and it is legal & safe to do so (e.g., car uncovered in open area, no people or pets in or nearby). If vehicle has not been driven for over a week, services will not be available until next time vehicle is started. Functionality depends on many factors, such as vehicle and smartphone connectivity. See usage precautions, service limitations & *Owner's Manual*. Data charges may apply. Registration, app download are required. Must have an active Safety Connect subscription. Annual fee required after 1-year trial. **11.** The backup camera does not provide a comprehensive view of the rear area of the vehicle. You should also look around outside your vehicle and use your mirrors to confirm rearward clearance. Environmental conditions may limit effectiveness and view may become obscured. See *Owner's Manual* for details. **12.** Do not rely exclusively on the Intuitive Parking Assist system. Always look over your shoulder and use your mirrors to confirm clearance. System effectiveness depends on many factors. See *Owner's Manual* for details. **13.** Dynamic Radar Cruise Control is designed to assist the driver and is not a substitute for safe and attentive driving practices. System effectiveness depends on many factors, such as weather, traffic and road conditions. See *Owner's Manual* for details. **14.** The Pre-Collision System is designed to help reduce the crash speed and damage in certain frontal collisions only. It is not a collision-avoidance system and is not a substitute for safe and attentive driving. System effectiveness depends on many factors, such as speed, driver input and road conditions. See *Owner's Manual* for details. **15.** Brake Assist is designed to help the driver take full advantage of the benefits of ABS. It is not a substitute for safe driving practices. Braking effectiveness also depends on proper brake-system maintenance, tire and road conditions. See *Owner's Manual* for details. **16.** HD Radio™ Technology manufactured under license from iBiquity Digital Corporation U.S. and Foreign Patents. HD Radio™ and the HD, HD Radio, and "Arc" logos are proprietary trademarks of iBiquity Digital Corp. **17.** iPhone® and iPad® are registered trademarks of Apple Inc. All rights reserved. **18.** Performance figures are for comparison only and were obtained with prototype vehicles by professional drivers using special safety equipment and procedures. Do not attempt. **19.** The SmartAccess system may interfere with some pacemakers or cardiac defibrillators. If you have one of these medical devices, please talk to your doctor to see if you should deactivate this system. **20.** The engine immobilizer is a state-of-the-art anti-theft system. When you insert your key into the ignition switch or bring a SmartAccess fob into the vehicle, the key transmits an electronic code to the vehicle. The engine will only start if the code in the transponder chip inside the key/fob matches the code in the vehicle's immobilizer. Because the transponder chip is embedded in the key/fob, it can be costly to replace. If you lose a key or fob, your Lexus dealer can help. Alternatively, you can find a qualified independent locksmith to perform high-security key services by consulting your local *Yellow Pages* or by contacting [www.aloa.org](http://www.aloa.org). **21.** All the airbag systems are Supplemental Restraint Systems. All airbags (if installed) are designed to inflate only under certain conditions and in certain types of severe collisions: Typically, frontal and knee airbags inflate in frontal collisions; side torso and side curtain airbags inflate in side collisions; and Roll-Sensing Curtain Airbags inflate at a severe roll angle or roll rate. To decrease the risk of injury from an inflating airbag, always wear seatbelts, sit upright in the middle of the seat as far back as possible and do not lean against the door. Do not put objects in front of an airbag or around the seatback. Do not use a rearward-facing child seat in any front passenger seat. The force of an inflating airbag may cause serious injury or death. See *Owner's Manual* for further information/warnings. **22.** Vehicle Stability Control (VSC) is an electronic system designed to help the driver maintain vehicle control under adverse conditions. It is not a substitute for safe driving practices. Factors including speed, road conditions and driver steering input can all affect whether VSC will be effective in preventing a loss of control. See *Owner's Manual* for details. **23.** FaceTime® is a registered trademark of Apple Inc. All rights reserved. **24.** Be sure to obey traffic regulations and maintain awareness of road and traffic conditions. **25.** F SPORT Accessories are warranted for 12 months from the date of installation or for the balance of the new-car or Certified Pre-Owned (CPO) warranty in force at the date of installation, whichever is greater, when installed by an authorized Lexus dealer. F SPORT Accessories installed by anyone other than an authorized Lexus dealer are warranted for 12 months from the date of purchase only, and the warranty coverage is limited to the replacement value of the F SPORT Accessories. These warranties do not cover maintenance services such as replacement of brake pads/linings or noise, vibration, cosmetic conditions and other deterioration caused by normal wear and tear. Part failure caused by improper installation by anyone other than an authorized Lexus dealer may void the F SPORT Accessories warranty, the new-vehicle warranty or both. F SPORT is a trademark of Toyota Motor Corporation. Products available through participating Lexus dealers. **26.** This floor mat was designed specifically for use in your model and model year vehicle and SHOULD NOT be used in any other vehicle. To avoid potential interference with pedal operation, each mat must be secured with its fasteners. Do not install a floor mat on top of an existing floor mat.

Lexus strives to build vehicles to match customer interest, and thus they typically are built with popular options and option packages. Not all options/packages are available separately, and some may not be available in all regions of the country. See [lexus.com](http://lexus.com) for information about options/packages commonly available in your area. If you would prefer a vehicle without any or with different options, contact your dealer to check for current availability or the possibility of placing a special order. Specifications, features, equipment, technical data, performance figures, options, and color and trim are based upon information available at time of printing, are subject to change without notice, and are for mainland U.S.A. vehicles only. Some vehicles shown with available equipment. See your Lexus dealer for details. Lexus reminds you to wear seatbelts, secure children in rear seat, obey all traffic laws and drive responsibly. For more information, call 800-USA-LEXUS (872-5398) or visit [lexus.com](http://lexus.com). To learn more about your financing options, contact your Lexus dealer or call Lexus Financial Services at 800-874-7050.

## CT 200h / CT 200h F SPORT

43 40 42 134

CTY EST. MPG<sup>1</sup> HWY EST. MPG<sup>1</sup> CMB EST. MPG<sup>1</sup> TOTAL SYSTEM HP

IN-LINE 4 1.8

ATKINSON-CYCLE ENGINE + LEXUS HYBRID DRIVE LITER

